

The John Ross building offers 24-hour concierge service, an amenity room, outdoor BBQ/picnic area for tenants to utilize.



LOBBY



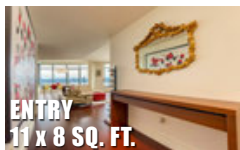
LOBBY

MAIN

As you enter the open living area, it will be hard to take your eyes off the incredible view. You'll appreciate the fact the view is front and center whether you are working in the kitchen, dining, relaxing in the living room, or working in the office.



LIVING ROOM
24 x 22 SQ. FT.



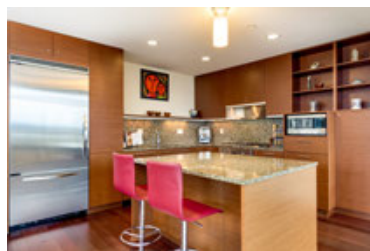
ENTRY
11 x 8 SQ. FT.



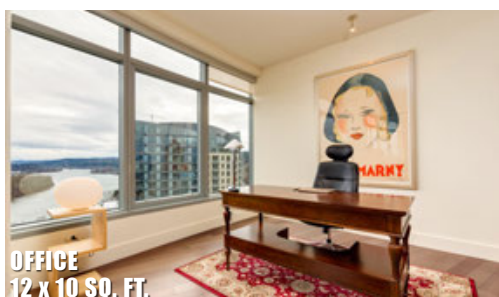
The kitchen boasts handy features such as under-the-cabinet lighting, built-in wine cooler, an island/eat bar and convection oven. It is also equipped with a walk-in pantry offering plenty of shelving for storage. The kitchen is open to the living and dining room and allows access to the covered deck.



KITCHEN
21 x 13 SQ. FT.



DINING ROOM
19 x 13 SQ. FT.



OFFICE
12 x 10 SQ. FT.

The cozy office features extensive built-ins and an enjoyable river view.

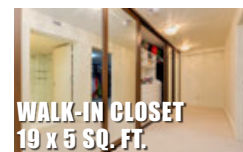
This lovely unit features a generous master bedroom suite, an ample walk-in closet with built-ins, and second bedroom and an extensive bonus room.



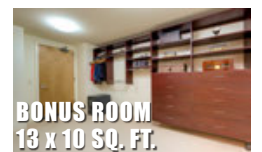
MASTER SUITE
28 x 13 SQ. FT.



MASTER BATH
13 x 9 SQ. FT.



WALK-IN CLOSET
19 x 5 SQ. FT.



BONUS ROOM
13 x 10 SQ. FT.



BEDROOM 2
11 x 11 SQ. FT.



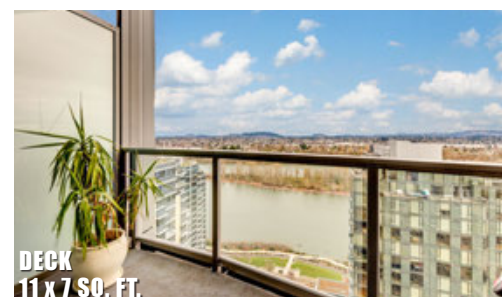
FULL BATH
9 x 8 SQ. FT.

EXTERIOR

The covered deck allows you to enjoy the fresh air, 28 floors up, and take in the view without restriction.



VIEW



DECK
11 x 7 SQ. FT.

